



VANNES EUROPE

CAST IRON Y STRAINER FLANGED PN 10/16 DIN 3202-1 F1 BLUE

Cast iron Y strainer flanged PN10/16 for filtration of heating, water distribution, water treatment and irrigation networks.
Strainer with removable filter and bolted bonnet
Threaded BSP draining cap allowing to install a draining valve.

Certificate

3.1



Size : DN15 to DN300
Connection : Flanges RF PN10/16
Min Temperature : -10°C
Max Temperature : +120°C
Max Pressure : 16 Bars for PN16 types
Caractéristiques : Removable stainless steel filter
Bolted bonnet with draining cap
Silicone Acrylic painting

Materials : Cast iron EN GJL-250

CAST IRON Y STRAINER FLANGED PN 10/16 DIN 3202-1 F1 BLUE

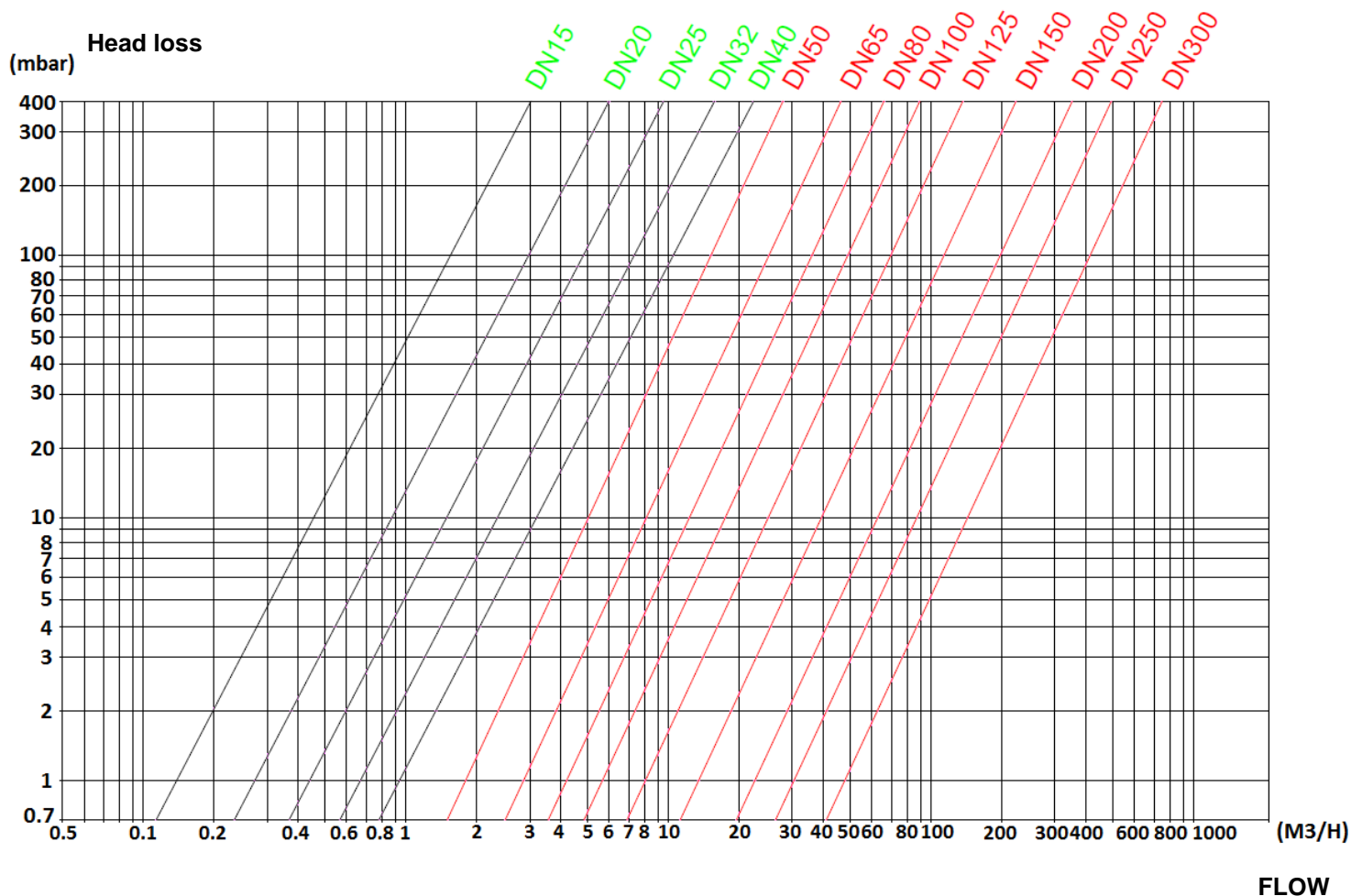
SPECIFICATIONS :

- Removable stainless steel filter
- R.F. flanges PN10/16
- Horizontal or vertical position with descendant fluid (respect the flow direction indicated by the arrow)
- Mesh 1mm from DN 15 to 50, 1.3 mm from DN 65 to 150 and 1.6 mm from DN 200 to 300
- Bolted bonnet with draining cap threaded BSP
- Silicone acrylic painting RAL 5005 color, 80-100µm thickness

USE :

- For water, water treatment, heating, irrigation
- Min Temperature Ts : - 10°C
- Max Temperature Ts :+ 120°C
- Max Pressure Ps : 16 bars for types PN16, 10 bars for types PN10

HEAD LOSS GRAPH :

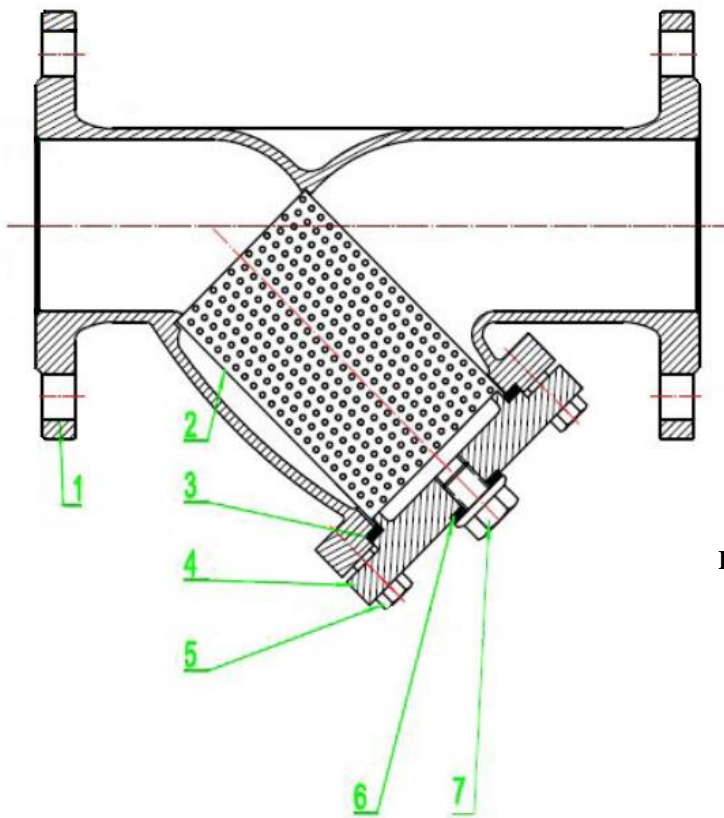


CAST IRON Y STRAINER FLANGED PN 10/16 DIN 3202-1 F1 BLUE

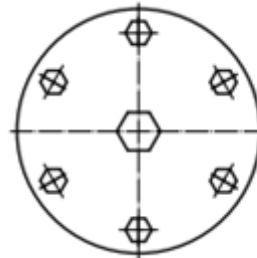
RANGE :

- Cast iron Y Strainer R.F. flanges PN10/16 from DN 15 to 300 Ref.221

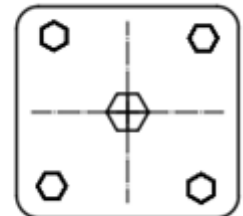
MATERIALS :



BONNET DN125-300



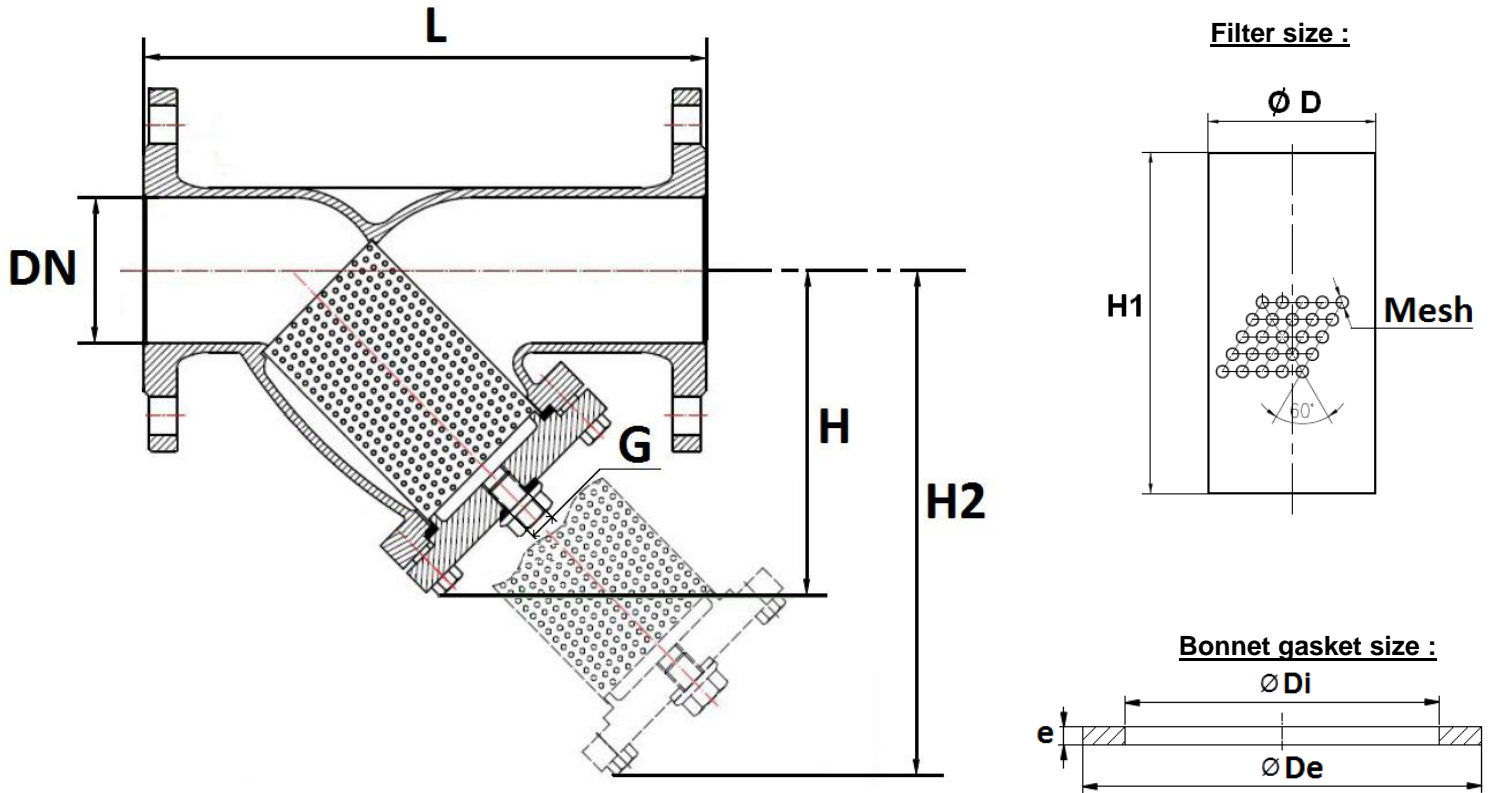
BONNET DN15-100



Item	Designation	Materials
1	Body	Cast iron EN GJL-250
2	Filter	AISI 304
3	Bonnet gasket	Stainless steel + graphite
4	Bonnet	Cast iron EN GJL-250
5	Bolting	Steel 8.8
6	Draining gasket	Stainless steel + graphite
7	Draining cap	Carbon steel ASTM A105

CAST IRON Y STRAINER FLANGED PN 10/16 DIN 3202-1 F1 BLUE

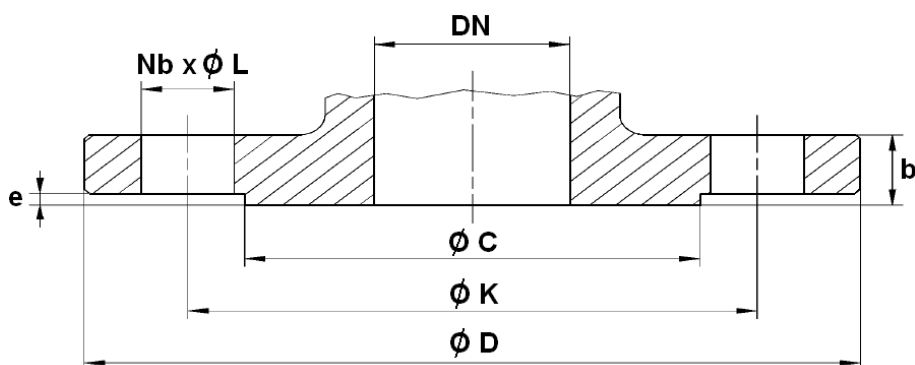
SIZE (in mm) :



DN	15	20	25	32	40	50	65	80	100	125	150	200	250	300
L	130	150	160	180	200	230	290	310	350	400	480	600	730	850
H	68	78	85	104	107	124	147	161	193	257	291	357	460	530
H2	105	118	130	154	169	199	237	260	321	410	466	570	666	786
G (drain BSP)	1/2"									3/4"				
Ø D	19	26	31	38	42	52	67	82	102	133	159	208	250	320
H1	51	56	63	70	88	105	127	140	180	215	247	300	340	381
Mesh	1						1.3				1.6			
Ø Di	21	27.5	32	45	45	54	72	86	104	138	162	212	252	324
Ø De	33	36	45	55	55	66	86	102	120	154	178	228	278	350
E	4.3	4	4.3	3.7	3.7	4.3	4.3	4.4						
Weight (Kg)	2.3	3	3.5	5	6	8	12	14	18	29.5	38.8	68	120	176
Ref.	221015	221020	221025	221032	221040	221050	221065	221080	221100	221125	221150	221200	221250	221300

CAST IRON Y STRAINER FLANGED PN 10/16 DIN 3202-1 F1 BLUE

FLANGES SIZE PN16 (in mm) :

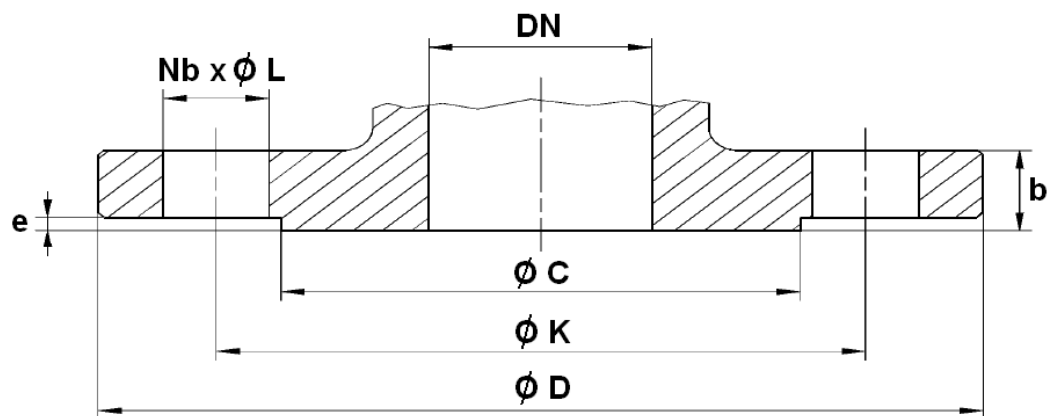


PN	PN10/16								
DN	15	20	25	32	40	50	65	80	100
Ø C	45	57	65	76	84	99	118	132	156
Ø D	95	105	115	140	150	165	185	200	220
Ø K	65	75	85	100	110	125	145	160	180
Nb x Ø L	4 x 14	4 x 14	4 x 14	4 x 18	4 x 18	4 x 18	4 x 18	8 x 18	8 x 18
b	16	16	16	16	18	20	20	20	22
e	1.5	1.5	1.5	1.5	1.5	2	2	2	2
Ref.	221015	221020	221025	221032	221040	221050	221065	221080	221100

PN	PN10/16		PN16		
DN	125	150	200	250	300
Ø C	184	211	263	319	370
Ø D	250	285	340	405	460
Ø K	210	240	295	355	410
Nb x Ø L	8 x 18	8 x 23	12 x 23	12 x 27	12 x 27
b	26	26	30	32	36
e	2	2.5	2.5	2.5	3
Ref.	221125	221150	221200	221250	221300

CAST IRON Y STRAINER FLANGED PN 10/16 DIN 3202-1 F1 BLUE

FLANGES SIZE PN10 (in mm) :



PN	PN10		
DN	200	250	300
Ø C	263	320	370
Ø D	340	395	445
Ø K	295	350	400
Nb x Ø L	8 x 23	12 x 23	12 x 23
b	30	32	36
e	2.5	2.5	3
Ref.	221201	221251	221301

CAST IRON Y STRAINER FLANGED PN 10/16 DIN 3202-1 F1 BLUE

STANDARDS :

- Manufacturer certified ISO 9001 : 2015
- DIRECTIVE 2014/68/EU : Products excluded (article 4, § 3)
- Certificate 3.1 on request
- Pressure tests according to EN 12266-1
- Length according to EN 558 series 1 (DIN 3202-1 F1 – NF 29354)
- R.F. flanges according to EN 1092-2 PN10/16

INSTALLATION POSITIONS :

Vertical position (descendand fluid)



Horizontal position



ADVICE : Our opinion and our advice are not guaranteed and shall not be liable for the consequences of damages. The customer must check the right choice of the products with the real service conditions.